



3 in 1 CCTV Technology:
Analogue • HD-TVI • IP

...Quick Start Guide

4, 8 & 16ch alien MegaHero Models

Everyone loves a Hero!





Available in 4, 8 or 16 channel models

MegaHero DVRs are designed for installation by a professional CCTV installer, for further support, please contact:

The alien MegaHero is a hybrid DVR (Digital Video Recorder) that allows users to view, record & playback CCTV footage from analogue, HD-TVI and IP cameras.

It has FREE software and phone apps for linking to a Router so that your CCTV cameras can be viewed over the Internet and even on your mobile!

The MegaHero is really easy to set up thanks to its built-in help menus to get you up and running as quickly as possible, it even has an Autoport feature that configures your Router for you. The new IP Postcode service gives you a FREE dynamic DNS which means you can connect to the Internet without having to fork out for a static IP address too.

Timed relays and the Kontrol & Kommand function allow you to control lights, gates, loudspeakers and many other 3rd party devices over the Internet using your MegaHero as the control device.

Plus Instant Detective Video Analytics allow you to quickly search through hours of recorded footage in just seconds to find the event you want so no more watching hours of pointless recordings.

With intelligent operating system and client software that allows endless possibilities for the user, the alien MegaHero really has

“all the features but none of the price”

Introduction	2	Tools Submenu	24
FAQ - Fast Answers Here	4	Setup Submenu	25
Front Panel	6	Video Submenu	26
Rear Connections	8	Schedule Submenu	27
System Setup Diagram	10	Drives Submenu	28
Step By Step Setup	11	Instant Submenu	29
Ways To Control The MegaHero	12	Backup Submenu	30
Main Menu	14	How To	31
Power Up & Shutdown	15	Instant Detective - Explained	46
Live View	16	Software Solutions	47
Smart Setup	18	Other Products To Consider	50
Playback Submenu	21	Specification	56
Playback Toolbar	22		

The following questions are some of the most commonly asked when setting up and operating an alien DVR. Hopefully the answers given on these pages and information supplied throughout this quick start guide can resolve any problems you may have.

- 1 What is the default username & password?**
The default username for your alien MegaHero is **'admin'** and the default password is **'555555'**.
- 2 How do I change the default admin password?**
The easiest way to change the default admin password is during **'Smart Setup'** on **page 18**. It can also be changed in the **'Setup'** menu under the **'User'** tab **page 25**.
- 3 Where is my AlienVision licence key?**
You will find this on the AlienVision software CD itself.
- 4 How many PCs can I activate with my CCTV licence key?**
You can activate up to 5 PCs with your licence. Additional licences can be purchased via your installer or through resellers on the aliendvr.com site.

- 5 How do I add HD-TVI and IP cameras to the DVR?**
HD-TVI cameras are simply connected to one of the BNC inputs. IP cameras need to be setup on the same network as the DVR. They can then be added to the DVR during Smart Setup (see page 20) or through the Video menu (see page 26)
- 6 How do I set it up to record?**
By default the DVR will automatically record 24/7, however, there are multiple ways to set the DVR to record. The simplest way is to do it during **'Smart Setup'** on **page 18**. For recording in **'Live View'** see **page 16**. To setup a recording schedule see **page 27**. Finally for instant recording see **page 29**.
- 7 How long can I record for?**
Recording times depend on the Hard Drive you have fitted and some of the record settings on the DVR. It is easy to record for over a month on an alienDVR but to calculate your exact drive requirements, try using the HD Calculator tool at aliendvr.com.
- 8 How do I back up an incident for the Police?**
It is easy to back up recorded footage onto a USB drive either at the DVR itself or using AlienVision software on your PC (locally or remotely). Find out **'How To - Backup Recorded Footage'** on **page 41-42**.

9

Can I add alarm inputs to my alienDVR?

Yes you can add alarm inputs such as PIRs, door contacts, break beams or any NO/NC relay to trigger an alarm. For wiring information, please refer to our 'How To - Add Alarm Inputs To Your MegaHero DVR' guide on page 43.

10

What is Instant Detective & how does it work?

Instant Detective is a great video analytics tool that lets you fast search through already recorded footage to see if movement occurred in a certain area on your camera screen. Find out how it works on page 46.

11

Can I control other devices using my alienDVR?

Yes even over the Internet, the Hero can control 3rd party equipment such as lights, sirens, gates and the popular VoiceOff loudspeaker. The Kontrol & Kommand timed relay allows for control of up to 248 different devices. Find out 'How To - Control 3rd Party Equipment' on pages 44-45.

12

Can I get a phone app to view my CCTV footage?

Yes alienDVR have both Android, iPhone and iPad apps so you can view your CCTV footage from anywhere in the world. Find out 'How To - Setup The Mobile App' on pages 38-39.

13

What do I need to view my CCTV footage over the Internet?

You'll need a network cable (straight patch not crossover) and a router. See 'How To - Network Your DVR' on page 32.

14

Do I need a static IP address?

No, alien DVRs come with free dynamic DNS as standard so this will save you the cost and hassle of setting up a static IP. Find out 'How To - Configure AlienDDNS' on pages 34-35.

15

How do I set up my Router for port forwarding?

The MegaHero has an **Autoport** feature which sets up port forwarding for you on compatible routers. Find out 'How To - Configure Your Router Using UPnP' on page 33.

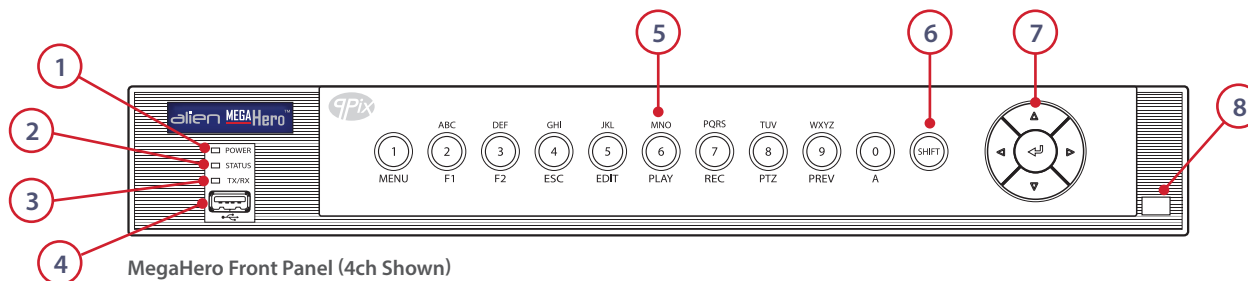
To manually set up port forwarding you will need to refer to the MegaHero instruction manual which can be found on the CD which accompanied the DVR.

For more information on setting up port forwarding see online **Tip 58** for Netgear routers or **Tip 216** for BT routers.

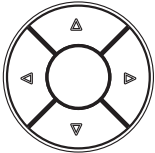

16

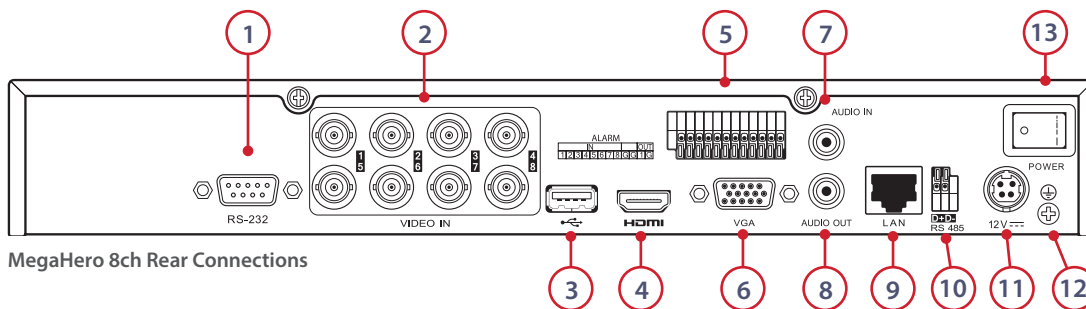
Can I install a bigger Hard Drive?

Most alienDVRs take a minimum of a 6TB drive and some models take more than one drive. Find out 'How To - Install A 3.5" SATA Hard Drive' on page 40 of this guide.



No.	Name	Function / Description
1	POWER	Power indicator turns green when powered on.
2	STATUS	Green when controlled by an IR remote or IR remote and keyboard together. Red when the SHIFT button is used. (6) Orange: A. When controlled by IR remote and keyboard at the same time and the SHIFT button is used. B. When controlled by IR remote and the SHIFT button is used.
3	TX/RX	Indicator blinks green when network connection is running.
4	USB INTERFACE	USB for mouse or memory stick.
5	1/MENU	Enter number "1" / MENU - Access the main menu interface.
	2/ABC/F1	Enter number "2" / Enter letters "A,B,C" / F1 - Selects all items on the list / Zooms out (zoom-) the PTZ camera / Switches between main and spot video output.
	3/DEF/F2	Enter number "3" / Enter letters "D,E,F" / F2 - Zooms in (zoom+) the PTZ camera / Cycles through tab pages.

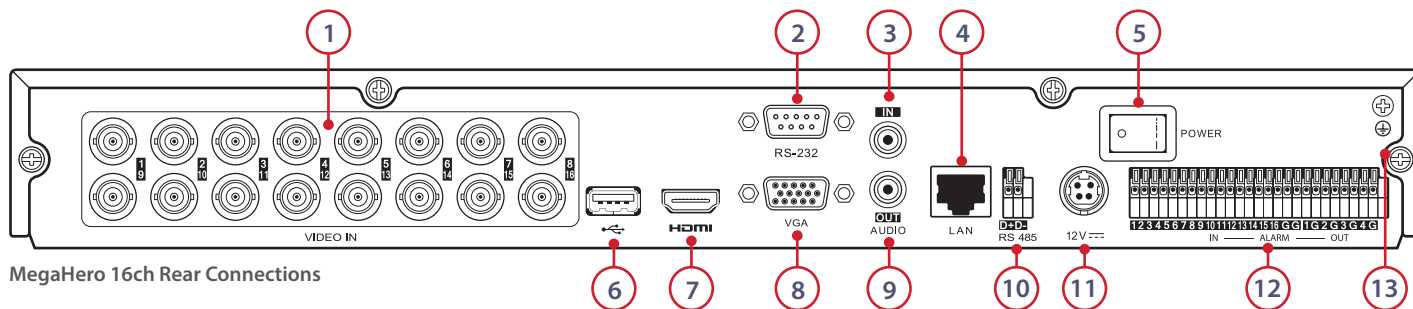
No.	Name	Function / Description													
5	4/GHI/ESC	Enter number "4" / Enter letters "G,H,I" / ESC - Exit and back to the previous menu.													
	5/JKL/EDIT	Enter number "5" / Enter letters "J,K,L" / EDIT - Delete characters before cursor / Select the check-box and ON/OFF switch / Start/stop record clipping in playback.													
	6/MNO/PLAY	Enter number "6" / Enter letters "M,N,O" / PLAY - Direct access to playback interface in playback.													
	7/PQRS/REC	Enter number "7" / Enter letters "P,Q,R,S" / REC - Manual record, direct access to manual record interface, manually enable/disable record.													
	8/TUV/PTZ	Enter number "8" / Enter letters "T,U,V" / PTZ - Access PTZ control interface.													
	9/WXYZ/PREV	Enter number "9" / Enter letters "W,X,Y,Z" / PREV - Multi-camera display in live view / In Tag playback interface, this button can be used to delete the selected tag.													
	0/A	Enter number "0" / A - Switch between input methods (upper and lower-case, symbols and numeric) / In Playback mode, this button can be used to add the default tag.													
6	SHIFT	Switch between number/letter input and functional control. e.g. Play, Esc.													
7	DIRECTIONS 	Navigate between different fields and items in menus.													
		<table border="1"> <thead> <tr> <th>Mode</th> <th>Function</th> </tr> </thead> <tbody> <tr> <td>All Playback Modes</td> <td>Up and Down buttons used to speed up and slow down recorded video.</td> </tr> <tr> <td>All-Day Playback</td> <td>Left/Right button selects the recorded video of next/previous day.</td> </tr> <tr> <td>Playback By Normal Video Search</td> <td>Left/Right button selects the next/previous recorded file.</td> </tr> <tr> <td>Live View Mode</td> <td>Directional buttons cycle through channels.</td> </tr> <tr> <td>PTZ Control Mode</td> <td>Controls the movement of the PTZ camera.</td> </tr> </tbody> </table>		Mode	Function	All Playback Modes	Up and Down buttons used to speed up and slow down recorded video.	All-Day Playback	Left/Right button selects the recorded video of next/previous day.	Playback By Normal Video Search	Left/Right button selects the next/previous recorded file.	Live View Mode	Directional buttons cycle through channels.	PTZ Control Mode	Controls the movement of the PTZ camera.
		Mode	Function												
		All Playback Modes	Up and Down buttons used to speed up and slow down recorded video.												
		All-Day Playback	Left/Right button selects the recorded video of next/previous day.												
		Playback By Normal Video Search	Left/Right button selects the next/previous recorded file.												
	Live View Mode	Directional buttons cycle through channels.													
	PTZ Control Mode	Controls the movement of the PTZ camera.													
ENTER 	Confirm selection in any menu. It can also be used to tick check-box fields.														
	Play or pause the video in playback mode. ENTER button will advance the video by a single frame in single frame playback mode. Stops/starts auto switch in Auto-switch mode.														
8	IR RECEIVER	Receiver for IR remote.													



MegaHero 8ch Rear Connections

No.	Name	Function / Description
1	RS232	Connector for RS232 devices such as the VoiceOff (see pg53).
2	VIDEO IN	BNC connectors for analogue & HD-TVI video input.
3	USB Interface	Connects USB mouse or USB flash memory devices.
4	HDMI	HDMI video output.
5	Alarm In/Out	Connection for alarm inputs and 1 alarm output.
6	VGA	DB15 connector for VGA output. Display local video output and menu.
7	AUDIO IN	RCA/Phono connector for audio input.
8	AUDIO OUT	RCA/Phono connector for audio output.
9	LAN Interface	Connector for LAN (Local Area Network). Also used for connecting IP cameras.
10	RS485 Interface	Connector for RS485 devices. Connect the D+ and D- terminals to T+ and T- of PTZ receiver respectively.
11	12V	12VDC power supply.
12	GND	Ground (needs to be connected when DVR starts up).
13	POWER	Switch for turning the device on/off.

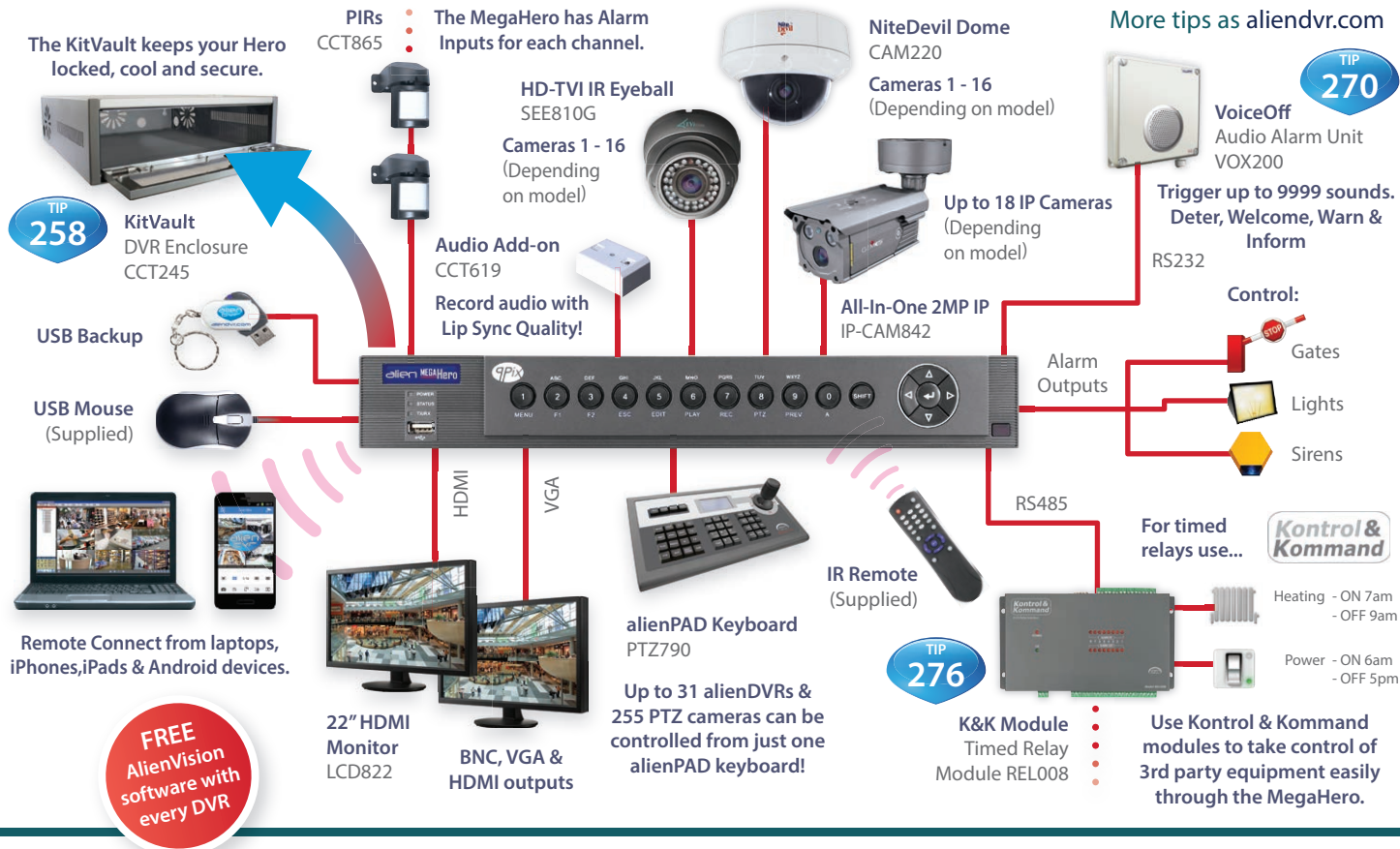
Rear Connections - 16ch



MegaHero 16ch Rear Connections

No.	Name	Function / Description
1	VIDEO IN	16 BNC connectors for analogue & HD-TVI video input.
2	RS232	Connector for RS232 devices such as the VoiceOff (see pg53).
3	AUDIO IN	RCA/Phono connector for audio input.
4	LAN Interface	Connector for LAN (Local Area Network). Also used for connecting IP cameras.
5	POWER	Switch for turning the device on/off.
6	USB Interface	Connects USB mouse or USB flash memory devices.
7	HDMI	HDMI video output.
8	VGA	DB15 connector for VGA output. Display local video output and menu.
9	AUDIO OUT	RCA/Phono connector for audio output.
10	RS485 Interface	Connector for RS485 devices. Connect the D+ and D- terminals to T+ and T- of PTZ receiver respectively.
11	12V	12VDC power supply.
12	Alarm In/Out	Connection for 16 alarm inputs and 4 alarm outputs.
13	GND	Ground (needs to be connected when DVR starts up).

System Setup & Connection Diagram



Note - Do not turn on the DVR until Step 3!

- 1 Connect Your Monitor**
Connect and turn on your monitor. Connecting the monitor after the DVR is powered up could lead to the monitor not being recognised by the DVR.
- 2 Connect Your Cameras**
We recommended that cameras are connected and powered prior to the DVR being turned on. Ideally IP cameras should be networked before you setup the DVR.
- 3 Power Up The DVR**
Once your monitors and cameras are connected power up the DVR.
- 4 Live View**
The DVR will start up in '**Live View**' mode **page 16-17**. Right click the mouse to display the Main menu. You will be asked to enter the Admin password (**555555**). From the Main menu enter the '**Setup**' menu and check '**Smart Setup**'. Click '**Apply**' and reboot the DVR by returning to the Main Menu, selecting '**Turn Off**' then '**Reboot**'.

- 5 Program Using Smart Setup**
When the DVR reboots the '**Smart Setup**' menu will be displayed. In this menu you can quickly configure a lot of the key settings for the DVR. **page 18-20**
- 6 Advanced Programming**
Now is a good time to set alarm triggers and schedules. This is the most effective way to capture footage. Setting different alarm types and recording schedules lets you choose when and what to record. This is done via the '**Setup**', '**Video**' and '**Schedule**' options on the Main menu. **page 25-27**
- 7 Network And Remote Monitoring**
Networking your DVR allows you to backup footage using client software, receive email notifications, view real-time video, playback footage and control the DVR using a PC, mobile or tablet. Step by step guides on networking, remote monitoring, DDNS and port forwarding can be found in the '**How To**' section of the Main menu. **page 31-45**

The simplest way to program and set up your MegaHero is using a mouse, the on screen keypad and the BlueDisc menu. **We recommend** you connect the mouse to the rear USB port of the DVR, leaving the front USB port free for fast backing up of footage.



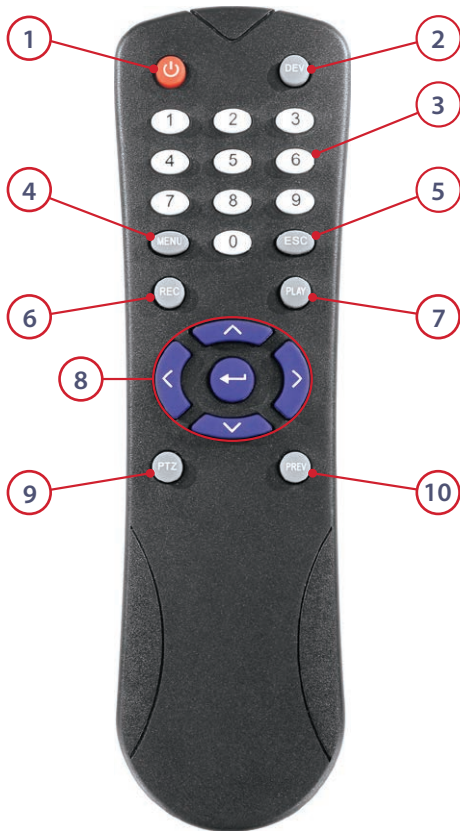
On Screen Soft Keypad

Icon	Function / Description
	Symbols
	Lower-case/Upper-case
	Space
	Enter
	Backspace
	Exit



USB 3 Button Mouse (Supplied)

Name	Action	Function / Description
Left-Click	Single Click	Back to the Main menu. Menu: Select and enter.
	Click & Drag	PTZ control: pan, tilt and zoom. Tamper-proof, privacy mask and motion detection: Select target area. Digital zoom-in: Drag and select target area. Live view: Drag channel/time bar.
Right-Click	Single Click	Live view: Show menu. Menu: Exit current menu to upper level menu.
Scroll-Wheel	Scrolling Up	Live view: Previous screen. Right-click Menu: Previous item.
	Scrolling Down	Live view: Next screen. Right-click Menu: Next item.



No.	Button	Name	Function / Description
1		POWER	Power on/off the device.
2		DEV	Enables/Disables Remote Control.
3		Alphanumeric Buttons:	Switch to the corresponding channel in Live view or PTZ Control mode. Input numbers and characters in Edit mode. Switch between different channels in All-day Playback mode.
4		MENU	Back to the Main menu (after successful login).
5		ESC	Back to the previous menu. Press for arming/disarming the DVR in Live View mode.
6		REC	Enter the Manual Record settings menu. In PTZ control settings, press the REC button and then you can call a PTZ pre-set by pressing a Numeric buttons.
7		PLAY	Entering the All-day Playback menu.
8		DIRECTION/ ENTER	Navigate between different fields and items in menus. In Playback mode, the Up and Down button are used to speed up and slow down the playing of recorded video. Left/Right buttons used for 30s reverse/30s forward during playback. Cycle through channels in Live view mode.
9		PTZ	Enter the PTZ Control mode.
10		PREV	Switch between single screen and multi-screen mode.



BlueDisc Menu System

Main Menu - BlueDisc Menu System

Every MegaHero has our ultra easy to use BlueDisc menu system. With its clear and simple layout, it's easy to navigate and find all the features the MegaHero has to offer.

This quick start guide gives you a brief overview of the BlueDisc menu and each submenu. For more in depth information about the Hero's menu system and settings, please refer to the full MegaHero instruction manual supplied on the CD with the DVR.

- Power Up & Shutdown pg15
- Live View pg16-17
- Smart Setup pg18-20
- Playback pg21
- Playback Toolbar pg22-23
- Tools pg24
- Setup pg25
- Video pg26
- Schedule pg27
- Drives pg28
- Instant pg29
- Backup pg30
- How To pg31

3 clicks completes most actions!



Shutdown Interface

Default Admin Password: 555555

New Password Reminder

If you decide to change the default password, please feel free to use this box to write down a password reminder to jog your memory.

Proper startup and shutdown procedures are crucial for extending the life of the device. The hard drive spins at around 7000rpm, cutting power to the DVR stops the hard drive instantly which can cause damage. When shut down correctly the hard drive slows down gradually to prevent this.

Power Up

With the DVR plugged into the mains socket, power the DVR using the switch on the rear.



The power LED on the front of the DVR should show green indicating the device is getting power.

Shutdown

To power down the DVR, enter the 'Turn Off' menu. Click the 'Shutdown' button then click the 'Yes' button. When instructed, turn off the Power switch on the rear of the device.

From the Turn Off menu you can also Logout or Reboot the DVR.



Prevent loss of your recorded footage caused by power cuts by fitting a UPS with your DVR.



Live View Interface

Live view shows you the video image for each camera in real time. The device automatically enters Live View mode when powered up. It is also at the very top of the menu hierarchy, thus pressing the 'ESC' button a number of times (depending on which menu you're on) always brings you to the Live View mode.

Live View Icons

In the live view mode, there are icons at the top right of the screen for each channel showing the status of the record and alarm for each channel. This enables you to confirm when the unit is triggering an alarm/motion and whether the unit is recording for that channel.

Icon	Function / Description
	Alarm (video loss, tampering, motion detection or sensor alarm)
	Record (manual record, schedule record, motion detection or alarm triggered record)
	Alarm & Record

Quick Setting Toolbar

On the screen of each channel, there is a quick setting toolbar which shows when you left-click the mouse on the camera.



Quick Setting Toolbar

Quick Setting Toolbar Explained

In Live View mode, left click the mouse button on any channel to see the Quick Setting Toolbar.

Icon				PTZ			
Description	Manual Record	Instant Playback	Mute Audio	PTZ Control	Digital Zoom	Image Settings	Close

Live View Menu

In Live View mode, right click the mouse button on the window to see the Live View Menu.

	Menu	
	Single Screen	▶
	Multi-screen	▶
	Previous Screen	
	Next Screen	
	Start Auto-switch	
	Start Recording	▶
	Add IP Camera	
	Quick Settings	▶
	Playback	
	Aux Monitor	
	PTZ Control	

Name		Function / Description
Menu		Goes back to the main menu.
Single Screen	▶	Switch to the single full screen by choosing a channel number from the dropdown list.
Multi-screen	▶	Adjust the screen layout by choosing from the dropdown list.
Previous Screen		Switch to the previous screen.
Next Screen		Switch to the next screen.
Start/Stop Autoswitch		Enable/disable the auto sequencing of the screens.
Start Recording	▶	Start all-day normal recording or motion detection recording for all channels.
Add IP Camera		Enter dialogue box to add/ delete IP cameras to/from DVR.
Quick Settings	▶	Set the video output mode to Standard, Bright, Gentle or Vivid.
Playback		Enter playback interface. See page 23 for more information.
PTZ Control		Displays on-screen PTZ controls.



Resolution	
System Resolution	1280*1024/60HZ <input type="checkbox"/>

Recommended Monitor Resolution

Smart Setup	
Admin Password	*****
New Admin Password	<input checked="" type="checkbox"/>
New Password	MegaHero
Confirm	MegaHero

Admin Password Setup

Default Admin Password: 555555

Time Zone	(GMT+00:00) Dublin, Edinburgh, London <input type="checkbox"/>
Date Format	DD-MM-YYYY <input type="checkbox"/>
System Date	25-06-2015 <input type="checkbox"/>
System Time	17:20:17 <input type="checkbox"/>

Time & Date Setup

Smart Setup is a quick and easy way to configure some of the key settings on the MegaHero. This is a useful tool when using the DVR for the first time.

To enable Smart Setup, start the device and from the Main menu enter the 'Set Up' Menu (page 25). Check 'Smart Setup' in the general tab, click 'Apply'. Now go back to Main menu and enter the 'Turn Off' menu. From here click 'Reboot' to restart the DVR. Upon restart the DVR will enter Smart Setup.

Settings which can be configured during Smart Setup:

Resolution

Quickly set the output resolution of the DVR. For a monitor we recommend 1280 x 1024. For a TV we recommend 1920 x 1080 (1080p).

Admin Password

As all our DVRs come with the same admin password, it is highly recommended that you set your own unique admin password. Doing this during Smart Setup ensures you DVR is secure right from the get go. (See Admin Password Setup on the left.)

Time & Date

It is vitally important to set the DVR to the correct time and date. The wrong time and/or date will cause schedules to start and



NIC Type	10M/100M Self-adaptive
Enable DHCP	<input type="checkbox"/>
IPv4 Address	192 .168 .1 .240
IPv4 Subnet Mask	255 .255 .255 .0
IPv4 Default Gateway	192 .168 .1 .254
Preferred DNS Server	
Alternate DNS Server	

Network Setup

Server Port	8240
HTTP Port	80
RTSP Port	1240
Enable UPnP	<input type="checkbox"/>
Enable DDNS	<input type="checkbox"/>
DDNS Type	AlienDDNS
Server Address	ippostcode.com
Device Domain Name	XXX11011.ippostcode.com
User Name	
Password	

Advanced Network Configuration

stop at the wrong time. This could lead to important incidents not being recorded.

The correct time and date also helps identify when an incident occurred.

Network Setup

Setting your DVR up on a network will allow you to remotely monitor the DVR from a PC, tablet or mobile phone once port forwarding has been configured. We would recommend that you attain advice from a network professional if you intend to remotely monitor your DVR, however advice and guidance is available at aliendvr.com.

Advanced Network Configuration

If you intend to remotely monitor you DVR via the web or one of our apps you must first setup port forwarding and (if required) DDNS.

If your router supports UPnP you can simply tick 'Enable UPnP' and the DVR will automatically configure port forwarding for you.

Port Settings

Server: 8240 HTTP: 80 RTSP: 1240

Key information for your DDNS account can also be entered at this point. Full a full step by step guide on how to configure AlienDDNS see [page 34-35](#).



<input type="checkbox"/> Label	Capacity	Status	Property	Type	Free Space
<input type="checkbox"/> 1	931.51GB	Normal	R/W	Local	927GB

Hard Drive Management

<input type="checkbox"/> No.	IP Address	Amount of...	Device M...	Protocol	Managem
<input type="checkbox"/> 1	192.168.1.200	1	IPC	ONVIF	80
<input type="checkbox"/> 2	192.168.1.201	1	IPC	ONVIF	80

IP Settings

Camera	Analogue 1 <input type="button" value="v"/>
<input type="checkbox"/> Start Recording	
<input type="radio"/> Normal	
<input type="radio"/> Motion Detection	
<input type="button" value="Copy"/>	

Record Settings

Hard Drive Management

MegaHero DVRs purchased with a hard drive option do not need formatting. If you intend to use your own hard drives they must be formatted, otherwise they will not be recognised by the DVR.

IP Settings

Any compatible IP cameras on the same network as the MegaHero will be displayed in the available IP camera list. You can then add IP cameras to the DVR by checking the corresponding check box and clicking 'Add'.

Record Settings

The last window in Smart Setup is Record Settings. Here each camera can be set to start recording normally, or set to start recording when motion is detected. To speed things up settings can be copied from one camera and applied to others. For more information on setting up scheduled recordings see [page 27](#).



Example Of Playback Interface

Playback Overview

The **all new** playback interface makes it even easier to search for, playback and analyse recorded footage.

Different playback modes are now all accessed in the same screen from a simple drop down list.

Normal playback displays all footage for the defined camera(s) on the selected day(s).

Event Playback allows you to search for and playback footage by event type. Choose from Alarm Input, Motion, Line Crossing Detection and Intrusion Detection.

Tag Playback allows you to search for keywords given to previously tagged footage.

Instant Detective is the AlienDVR's inbuilt retrospective video analytics software.

Along with the standard **Motion Detection** which recalls footage where movement is detected in a user defined area, the MegaHero has two new options.

Line Crossing Detection displays footage when a person/object crosses a user defined line. **Intrusion Detection** finds all footage where a person/object moves into a defined area and stays there for a specified amount of time.

External File is another new feature which allows the user to playback footage from a connected USB device.

See overleaf for more information ▶▶▶

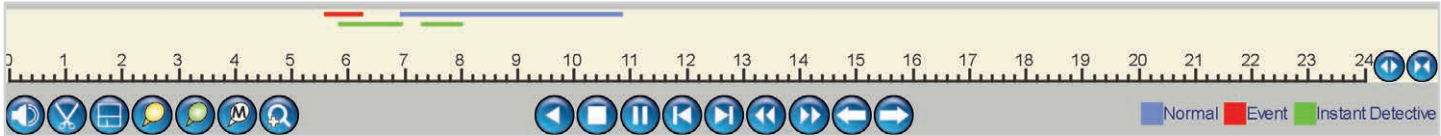


Top Bar Explained

The new toolbar at the top of the playback screen enables you to quickly switch between playback modes by selecting the option required from the drop down list. You can also enter full screen viewing or exit the playback screen using the top bar.

How To Exit Full screen Mode

To exit full screen viewing simply right-click the mouse or press the 'Menu' button on the front of the DVR.



Example Of Playback Toolbar

Playback Toolbar Explained

This toolbar has everything you need to control the playback of recorded footage. You can also set the analysis area when using Instant Detective, clip and save segments of a video and create or manage video tags.

The functions of each button is described on the opposite page.



Toolbar Icons Explained

Icon								
Function	Playback Options Dropdown List	Full screen	Exit Playback	Audio On / Mute	Start / Stop Clipping	Save Clipping	Add Default Tag	Add Customised Tag
Icon								
Function	Tag Management	Digital Zoom	Instant Detective Setup	Reverse Play	Stop	Play / Pause	30 Seconds Reverse	30 Seconds Forward
Icon								
Function	Speed Down	Speed Up	Previous: Recording / Day / Event / Tag / Search Result	Next: Recording / Day / Event / Tag / Search Result	Zoom In Timeline	Zoom Out Timeline	Video Type Bar Normal / Event	Instant Detective Search Result

Single Frame Playback

You can also advance recordings by a single frame at a time. To achieve single frame playback, whilst the footage is playing or reverse playing, press the '**Speed Down**' button until the playback speed is '**Single**'. (Hover over the button to see current playback speed). Pressing the '**Pause**' button will now advance the footage by a single frame.



TOOLS - Use this menu to - Get Engineer diagnostics, tools & system logs

System Info > Device Info Camera Record Alarm Network HDD

Log Information
Import/Export
Upgrade
Default
Net Detect
HDD Detect

Device Name	MegaHero
Model	MEGA204
Serial No.	XXX11011
Firmware Version	V3.1.3. Build 150605
Encoding Version	V5.0. Build 150303

Live View Back

Tools Interface

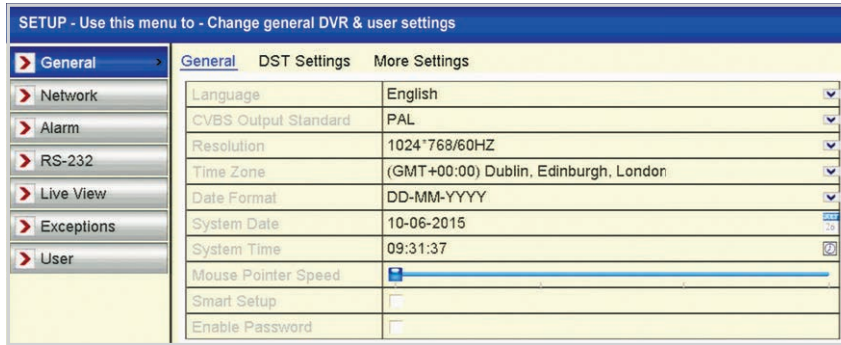
Tools Submenu Overview

The Tools menu is where you can view all the important system information such as Model and Serial number. You can also see key information on cameras, recordings, alarms, networks and hard drives.

Log Information shows all major system events within a specified time period such as alarm triggers, when the device is powered on or off and network issues. Recordings found can be played back from here.

Other functions available through the Tools submenu are:

- View/Playback By System Log
- Import/Export System Configuration Files
- Upgrade Firmware
- Default System Settings
- View Network Information
- Test Network Delay And Packet Loss
- Check And Test Hard Drives For Errors



Setup Interface

Setup Submenu Overview

The Setup menu is where all major settings are configured from network settings to user accounts.

In the **General** tab all of the basic device settings can be adjusted such as system language, system time/date and device name.

The **Network** tab is where you will enter all network information like the IP address, DDNS settings and email settings for email notifications.

The **Alarm**, **RS232** & **Exceptions** tabs allow you to configure alarm inputs and outputs, RS232 settings and exceptions (such as a full HDD) and user accounts.

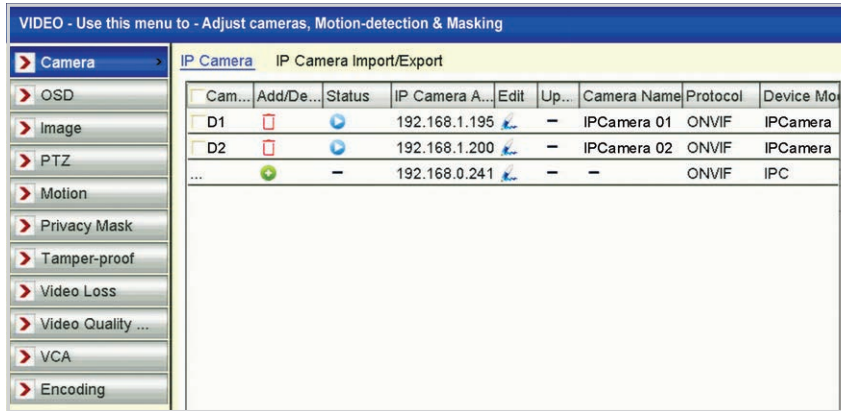
Under the **Live View** tab you can set video outputs, which channels are displayed where, and for how long. You can also setup zero channel encoding to stream multiple channels over a single channel using minimal bandwidth.

In the **User** tab, as the administrator you can create new accounts and choose what permissions users have both locally and remotely. You can also edit and delete current users. On initial setup there will only be the administrator account.

If the **Admin password** has not already been changed it can be set under the **User** tab.

Settings which can be configured inside the Setup menu:

- System Settings
- Network Settings
- Alarm Inputs & Outputs
- RS232
- Live View Settings
- Exceptions
- User Accounts



Video Interface

Video Submenu Overview

The Video menu is where you can configure the camera for the best quality and most efficient recordings.

Here you can add, edit or delete **IP cameras**, set the camera's **OSD**, image settings such as brightness and contrast, **PTZ** presets, patterns and patrols.

Extra security settings can also be configured here including **Motion Detection**, **Line Crossing Detection**, **Intrusion Detection** and **Privacy Masking** along with alarm triggers for **Video Loss** and **Tampering**.

Video Quality Diagnostics allows you to set the threshold as to when the DVR alarms if it encounters blurred images, abnormal brightness or colour cast.

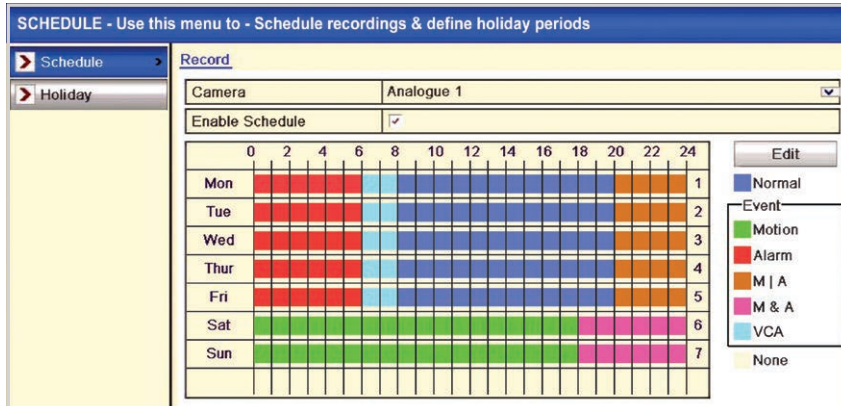
The Video menu is also where the video settings are set for recording substream such as resolution and bit rate.

Functions available through the Video submenu:

- OSD Configuration
- Image Settings
- PTZ Settings
- Motion Detection
- Privacy Masking
- Tamper-proof Setup
- Video Loss Setup
- Video Encoding
- Line Crossing Detection
- Intrusion Detection
- Quality Diagnostics



To copy settings from one camera to another simply click the 'Copy' button, here ticking the 'Analogue' checkbox will copy the settings to all other cameras. Alternatively you can tick individual cameras you wish to copy the settings to. Click 'OK' to apply.



Schedule Interface (Example For A Convenience Store)

Schedule Submenu Overview

In the Schedule menu you can create or edit recording and holiday schedules.

Each channel can be scheduled to record for set periods of time over the course of a day. Cameras can be set to only record events such as motion detection or an alarm trigger during certain hours.

This flexibility enables you to create an effective recording schedule for any situation. Creating a bespoke schedule also allows you to record for greater periods of time as cameras are not constantly recording.

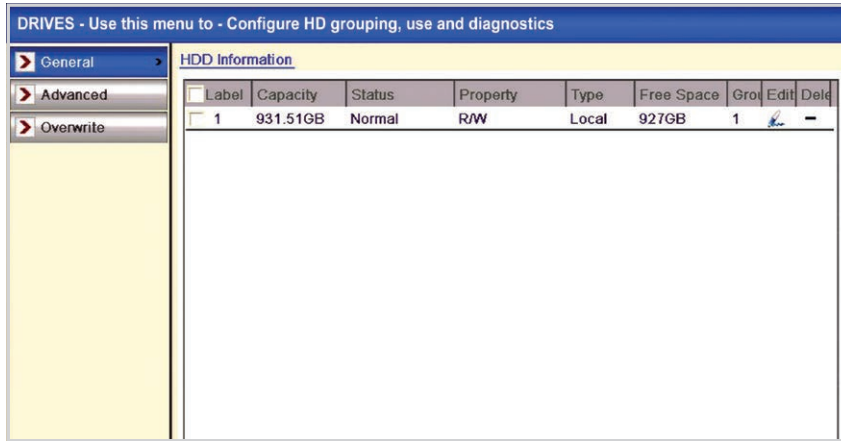
Holiday schedules can be configured if a different recording schedule is required over a long period of time.

Functions available through the Schedule submenu:

- Recording Schedules
- Holiday Schedules



6 options are available when creating a recording schedule. 'Normal' will record exactly as the camera has been configured. 'Motion' records when motion is detected. 'Alarm' records when an alarm is triggered. 'Motion/Alarm' records when motion has been detected or an alarm has been triggered. 'Motion & Alarm' will only record when motion is detected and an alarm is triggered at the same time. Finally 'VCA' (Video Content Analysis) will start recording when Line Cross Detection or Intrusion Detection is triggered.



Drives Interface

Drives Submenu Overview

The Drives menu allows you to view and edit **hard drive information**. You can also add, delete and format hard drives from here.

Properties can be set for each hard drive such as read and write or read only as well as hard drive groups.

Hard drive groups can be created to specify which hard drive a camera records to. Important cameras for example could be assigned a dedicated hard drive.

If hard drives are set to Quota mode, individual cameras can be assigned a portion of a hard drive. This allows you to set a maximum recording capacity for each camera.

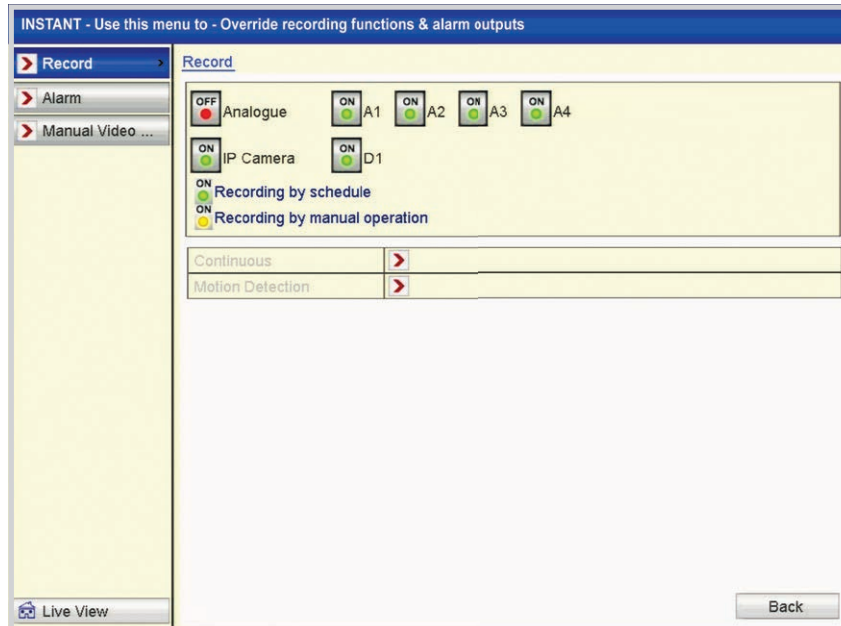
The Overwrite option in the Drives menu lets you select whether the device overwrites old data when full. If set to **No**, when the hard drive is full, the DVR will stop recording.

Functions available through the Drives submenu:

- Set HDD Properties
- Set HDD Group
- Add & Delete Hard Drives
- Format Hard Drives
- Set HDD Mode
- Set HDD Full Action



See online tip 233 for a guide on Comprehensive Hard Drive Management at aliendvr.com



Instant Interface

Instant Submenu Overview

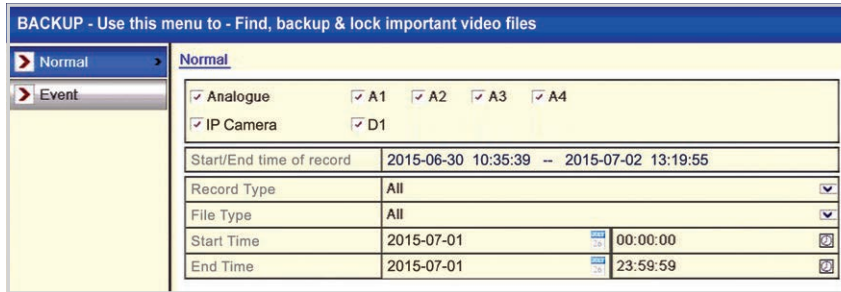
In the Instant menu you are able to set any or all channels to **instantly record**. Doing this temporarily overrides any schedule or alarm previously set.

The Instant menu also allows you to instantly trigger all or individual **alarms**.

In the **Manual Video Quality Diagnostics** tab you can test specific channels for blurred images, abnormal brightness or colour casting.

Functions available through the Instant submenu:

- Record Instantly
- Trigger Alarms Instantly
- Camera Video Quality Diagnostics



Backup Interface

Backup Submenu Overview

The Backup menu is where you can search for, and export, recorded footage to either USB memory stick or USB CD/DVD writer.

A **Quick Export** can be performed which exports selected channels over a given time period.

To export specific footage you are able to search by channel, time, record type and file type. Exporting footage in this way ensures only recordings needed are backed up.

You also have the option to backup by **Event**. If it is known an event has been triggered, event type, start time, end time and channel be set.

Functions available through the Backup submenu:

- Quick Export
- Normal Export
- Event Export



We recommend plugging the mouse into the rear USB port leaving the front USB port free for backing up footage.

When a USB device is connected it can be selected form the 'Device Name' drop down list in the 'Export' interface.




HOW TO - Help and information on how to use this device

STEP-BY-STEP


- DHCP
- Router Confi...
- Schedule Rec...
- Motion Detecti...
- Back up Reco...
- Remote Veive...

Set up your alien device on the network. page 1/1

- Connect the LAN socket of your device to your router using a straight patch cable. (Do not use a crossover cable which is used for direct connection between your device and PC.)




- On the main menu of the device select 'Set Up' then click the 'Network' tab.



- Check the 'Enable DHCP' box and click 'Apply'.

MAC Type	10M/100M/1000M Self-adaptive
Enable DHCP	<input type="checkbox"/>
IP:192.168.1.240	
Subnet Mask	255.255.255.0
Default Gateway	192.168.1.254
IP Address 1	
IP Address 2	
Default Community	
DHCP Address	cd:93:40:0a:0c:05:01
MTU (bytes)	1500
Enabled DHCP Server	<input type="checkbox"/>
Enabled DHCP Server	192.168.1.254
Enabled DHCP Server	0.0.0.0

- Go back to the main menu and select 'Tools' then click the 'Network' tab at the top. Note these settings for later:
 - The new IP address of your device (from the router)
 - Subnet address of the local network
 - Gateway address of the local network



Enable DHCP

How To Interface

How To Submenu Overview

The How To pages are the MegaHero's inbuilt help documents. Here you will find step by step guides on how to setup everything from networks to configuring the alienDVR mobile apps.

You can find some useful **How To** guides on the following pages which cover:

- Networking pg32
- UPnP Router Configuration (AutoPort) pg33
- Configuring AlienDDNS pg34-35
- Connecting To A Local PC pg36-37
- Android Phone & iPhone Setup pg38
- Android Tablet & iPad Setup pg39
- Install A 3.5" SATA Hard Drive pg40
- Backup Recorded Footage pg41-42
- Add Alarm Inputs pg43
- Control 3rd Party Equipment pg44-45



How To - Network Your DVR

- 1 Connect the LAN socket of your device to your router using a straight patch cable.

(Do not use a crossover cable which is used for direct connection between your device and PC.)



- 2 On the main menu of the device select 'Set Up' then click the 'Network' tab.



- 3 Check the 'Enable DHCP' box and click 'Apply'.

General	PPPOE	DDNS	NTP
NIC Type			10M/100M
Enable DHCP			<input checked="" type="checkbox"/>
IPv4 Address			192.168.1.1

- 4 Go back to the main menu and select 'Tools' then click the 'Network' tab at the top.

Go to - Get Engineer diagnostics, tools & system logs					
Device Info	Camera	Record	Alarm	Network	HDD
NIC				LAN1	
IPv4 Address				192.168.1.240	
IPv4 Subnet Mask				255.255.255.0	
IPv4 Default Gateway				192.168.1.254	

Note these settings for later

IP Address: _____

Subnet Mask: _____

Gateway: _____



How To - Configure Your Router Using UPnP

Every MegaHero comes with the 'Autoport' feature which will automatically set up port forwarding for you in compatible routers, saving you time and energy (providing your router supports UPnP).

If port forwarding is not configured you can't remotely access the DVR as the router's ports used by the Hero will be blocked.

- 1 On the main menu of the DVR select '**Set Up**' then click the '**Network**' tab.
- 2 Select the '**NAT**' tab to enter the UPnP interface.

Enable UPnP	<input checked="" type="checkbox"/>				
Mapping Type	Auto				
Port Type	Edit	External ...	External IP Address	Port	UPnP Status
HTTP Port		80	0.0.0.0	80	Inactive
RTSP Port		1240	0.0.0.0	1241	Inactive
Server Port		8240	0.0.0.0	8241	Inactive
HTTPS Port		443	0.0.0.0	443	Inactive
<input type="button" value="Refresh"/>					

- 3 Check the '**Enable UPnP**' checkbox to enable UPnP.
- 4 Set the Mapping Type to '**Auto**'. When you select Auto, the mapping ports can be automatically assigned by the router.
- 5 You can click '**Refresh**' to get the latest status of the port mapping.
- 6 Click the '**Apply**' button to save the settings.

Not all routers support UPnP. If the port status remains inactive after enabling UPnP you will need to do manual port forwarding. To configure your router manually, please refer to the MegaHero instruction manual found on the CD which accompanied the DVR.



It is vital that you set up port forwarding before attempting to set up AlienDDNS or remote monitoring.



How To - Configure AlienDDNS (Dynamic DNS)

Every MegaHero is supplied with a free Dynamic DNS service for its user. This allows you to quickly set up the DVR for remote monitoring, without the added expense or hassle of setting up a static IP.



Make sure you or your customer has access to an email account before starting this set up.

Enter A DNS Server Address

- 1 On the main menu of the device select **'Set Up'** then click the **'Network'** tab.
- 2 Enter the appropriate server address (ideally your router's internal address, alternatively 8.8.8.8).

Preferred DNS Server	192 . 168 . 1 . 254
Alternate DNS Server	8.8.8.8

- 3 Whilst in the networking menu, check the gateway field is the same as your router's internal address as well.

Enable AlienDDNS

- 1 Now click the **'DDNS'** tab in the top bar.
- 2 Tick the **'Enable DDNS'** checkbox.
- 3 Ensure **'AlienDDNS'** is selected from the **'DDNS Type'** drop down list.
- 4 Leave the password field blank.

- 5 Enter a valid email address into the email field (you will receive an email).

Enable DDNS	<input checked="" type="checkbox"/>
DDNS Type	AlienDNS
Server Address	ippostcode.com
Device Domain Name	XXX11011.ippostcode.com
User Name	Not Required
Password	*****
Email	*Your Email Address

- 6 Click **'Apply'**.

The DVR should then connect to ippostcode.com requesting a **'New'** DNS record for itself, the server should respond with **'Record Created'** and send you an email containing a password.



Enter Your Alien DDNS Password

- 7 Enter the password from the email into the Alien DDNS 'Password' entry field.

- 8 Click 'Apply'.

The DVR should connect again, this time issuing an 'Update' DNS request using the password.

If successful the server responds with an 'Update successful' message, otherwise it returns an error message, e.g.: 'Invalid Password', please check and try again. This update should take approximately 20 seconds.

Accessing The DVR

The domain name registered takes the form of the DVR's internal serial number followed by ippostcode.com, for example: xxx11011.ippostcode.com, you can use this as the domain entry in AlienVision, or the mobile clients, instead of an IP address.



Don't forget to change the admin password from '55555' when setting up AlienDDNS. This will help prevent any unauthorised access to your DVR.

Note these settings for future reference

Preferred DNS: _____

Alternate DNS: _____

Domain Name: _____



See online tip 296 for a in depth guide on configuring AlienDDNS at aliendvr.com



How To - Connect Your DVR To A PC

Every Alien MegaHero DVR comes with a free copy of the AlienVision client software. AlienVision can be used to control and monitor multiple AlienDVRs and IP cameras locally, or over the internet, creating a comprehensive remote monitoring solution.

AlienVision allows live viewing, playback, detailed search, relay control, remote configuration, multi-layered mapping and alarm notifications.



If a wired connection is required, connect an RJ45 crossover cable between the LAN port on the rear of the DVR and the LAN port on the PC/laptop.

- 1 Insert the CD shipped with your alien device into your PC and run.



- 2 Select 'AlienVision Client for Windows' from the list. Click on the 'Install Software' button and follow the on-screen prompts.



- 3 Run the AlienVision client. You can either register now or choose register later. If already registered select the AlienVision client. Enter your login details when prompted. The default login is:

AlienVision Default Login Details

Username: admin


Password: 666666

- 4 Click the 'Setup' button in the top bar to enter the configuration menu.






How To - Connect Your DVR To A PC

5 Right click on the 'UK' Globe icon  in the left hand window and select 'Add Device'.

Adding A Device

6 Fill in the details of the device you're adding and click 'OK' to save. Your DVR icon  should appear under the 'UK' Globe.

- Device Name: (your choice)
- Device IP: (found in network settings)
- Port: (default 8240)
- Username: (default 'admin')
- Password: (default '555555')
- Channel No: (no of inputs of your DVR)



TIP Once connected, you can learn more about how to use AlienVision at aliendvr.com. Look in our support section for great tips on backing up footage and setting up a basic emap in AlienVision.



The Phone app allows you to remotely monitor and control your DVR whilst on the go. This useful little app boasts remote viewing, remote playback, remote record, PTZ control and relay control.



Port forwarding and AlienDDNS must be setup in order for the Android and iPhone app to work.



1 For the **Android** app navigate to **www.aliendvr.com** on your Android device and click the '**Mobile Clients**' tab. Scroll down and download the latest Android client software.

For the **iPhone** app search for '**alien DVR**' on the app store.

2 Install the app and open. You will be prompted to make a login account to ensure secure access.

(Please note for the Android app you will have to have 3rd party app installation enabled on your phone or tablet. This can be found as an option under Application/Security Settings and reads: 'Allow installation of non-market applications')

3 Select '**Devices**' from the tab bar and click the '**Add**' button. Enter the following details then click the '**Save**' icon.

Device Name:
(your choice)

Address:
(Enter your IP address or domain name)

Port:
(default 8240)

Username:
(default 'admin')

Password:
(default '555555')



See online tip 275 for a step by step guide to watching live CCTV images on your mobile at aliendvr.com



How To - Setup The Android Tablet & iPad App

The tablet app allows you to remotely monitor and control your DVR whilst on the go & boasts remote viewing, remote playback, remote record, PTZ control and relay control.



Port forwarding and AlienDDNS must be setup in order for the Android tablet and iPad app to work.



1 For the **Android** app navigate to www.aliendvr.com on your Android device and click the '**Mobile Clients**' tab. Scroll down and download the latest Android client software.

For the **iPhone** app search for '**alien DVR**' on the app store.

2 Install the app and open. You will be prompted to make a login account to ensure secure access.

(Please note for the Android app you will have to have 3rd party app installation enabled on your phone or tablet. This can be found as an option under Application/Security Settings and reads: 'Allow installation of non-market applications')

3 In the app tap the '**Settings**' icon on the tab bar and select '**Devices**'.

4 Click the '+' to add a new device. Enter the following details and tap the '**Save**' button when done.

Name:
(choose device name)

Server:
(enter a fixed IP address or domain name)

Port:
(default 8240)

Username:
(default 'admin')

Password:
(default '555555')



How To - Install A 3.5" SATA Hard Drive

To record higher quality video or to record for longer periods of time you may wish to add an extra hard drive to your DVR. This process is a lot easier than you may think. After removing the top casing of the DVR just follow our quick step by step guide.

Note: MegaHero DVRs are designed to house 3.5" SATA hard drives.



See online tip 301 for a more in depth guide to installing a 3.5 inch SATA hard drive at aliendvr.com



Connect the power cable to the power socket on the hard drive. Connect the other end (White plug) to the power socket on the PCB.



Now connect the SATA cable to the SATA socket on the hard drive. Connect the other end to the SATA socket on the PCB then place the drive in the DVR case.



Screw through the four holes in the base of the DVR, and into the four fixing holes in the bottom of the hard drive. (Screws supplied with hard drive.)



How To - Back Up Recorded Footage

The recorded footage on an MegaHero can be backed up straight from the DVR itself or via the AlienVision client software. Both methods have their advantages but it is quick and simple to back up the desired footage using either.

Method 1 - Via USB

The fastest way to export footage is using the 'Quick Export' feature. In this way you can export your footage onto a USB flash drive, hard drive or DVD writer. To do a 'Quick Export' follow these simple steps:



- 1 From the main menu enter the '**Backup**' menu.
- 2 Choose the channel(s) you wish to backup.
- 3 Choose the time period in which the incident took place.
- 4 Click '**Quick Export**'.

- 5 Select your USB device for the '**Device Name**' dropdown list. If the USB device isn't showing try clicking '**Refresh**'.
- 6 You can backup straight onto the USB device or click '**New Folder**' to create a new folder in which to save your footage.
- 7 Click '**Export**' to begin exporting.
- 8 Stay in the export interface until the message "**Export Finished**" is displayed.

Continued on the next page ▶▶▶



For a complete step by step guide covering all the options for backing up footage from an MegaHero see online tip 308 at aliendvr.com




Method 2 - Via alienVision

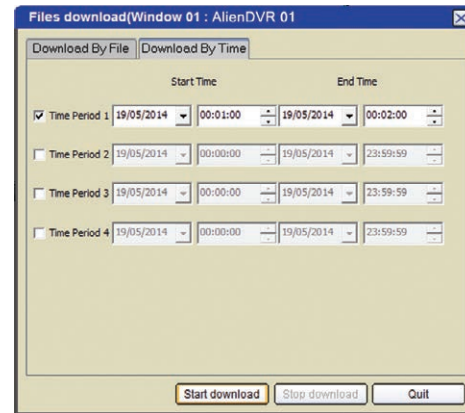
The second method uses the AlienVision client software which comes free with every alienDVR. This method allows you to back up footage remotely from anywhere in the world.

Downloaded footage can be stored on a PC or backed up onto a USB device or DVD.

There are various ways to back up footage using AlienVision. The fastest way is to 'Download By Time' just follow these simple steps:

- 1 During playback, highlight the channel from which you want to download footage and click the  button.
- 2 Click the 'Download By Time' tab.
- 3 Set the start date and time.
- 4 Set the end date and time.
- 5 Click 'Start Download'.

- 6 When the download is complete. A message will pop-up in the bottom right hand corner of the screen informing you that the download had finished.



Download By Time Interface



By default the footage is downloaded to C:\ProgramData\AlienVision\Downloads. You can also set your own download destination under 'Path Settings'. Just click the 'Setup' tab then the 'Local Settings' tab.



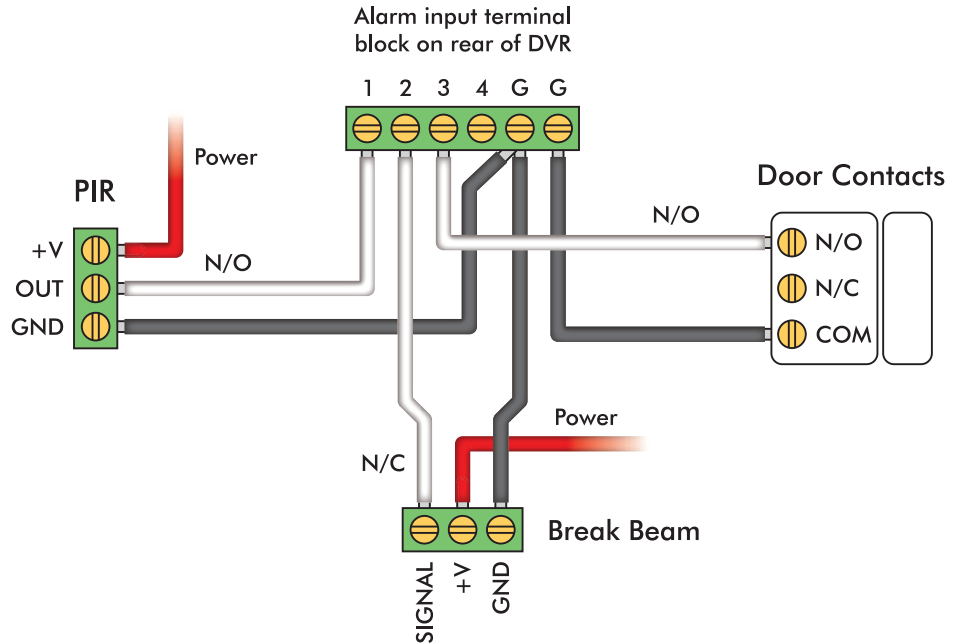
How To - Add Alarm Inputs

It's easy to add alarm inputs such as PIRs, door contacts and break beams to an alienDVR. Using alarm inputs can greatly enhance your security system.

Alarm inputs can be used to trigger the DVR to record a specific channel. This is a simple way to extend the record time of your DVR as it will only record small clips rather than all day.

An alarm trigger could also be used to give a command to a PTZ or VoiceOff unit. For example a PTZ could be set to look at a certain area such as a doorway. A VoiceOff unit could be configured to welcome customers or warn off intruders.

On the right is an example of how you may wire the alarm inputs on an alienDVR.



See online tip 311 for more information on connecting and configuring alarms at aliendvr.com



How To - Control 3rd Party Equipment

By just using your alien DVR and the free AlienVision software you can create a comprehensive security system.

You can achieve anything from a basic setup to a more advanced system. From alarm triggers turning on lights and sirens, to operators being able to control heating systems and security gates.

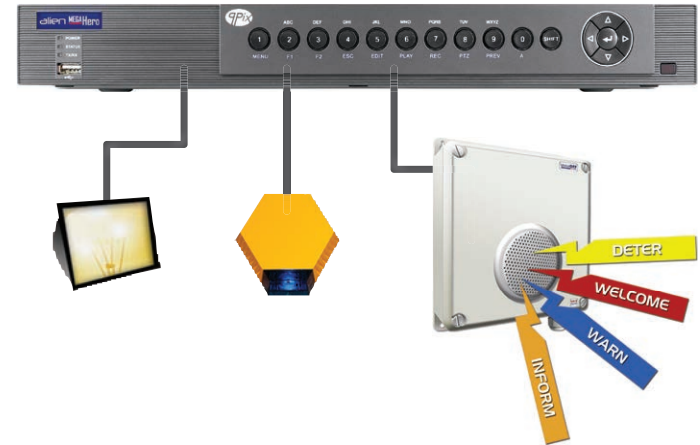
When using an alien DVR you have three options for controlling third party equipment; alarm outputs, RS232 and RS485 connections.



For more information on controlling 3rd party equipment see online tip 312 at aliendvr.com

Alarm Outputs (non timed relays)

Alarm outputs can be set to trigger equipment such as security lights, sirens, door locks or up to 20 audio messages with the VoiceOff audio unit.

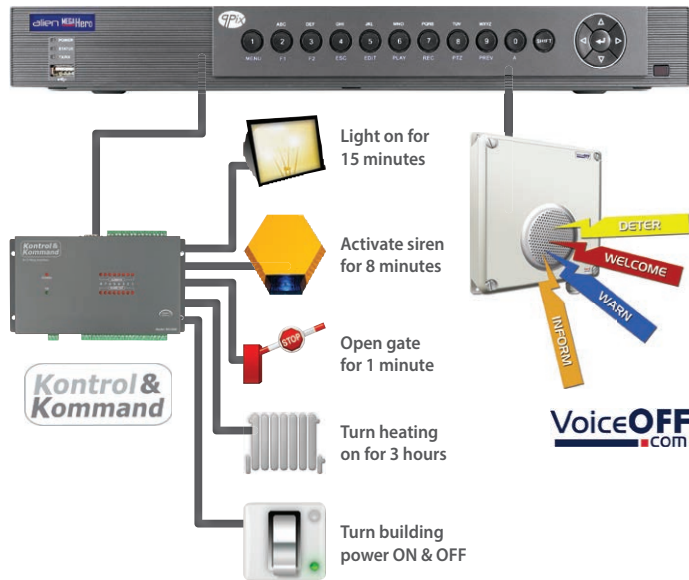




How To - Control 3rd Party Equipment

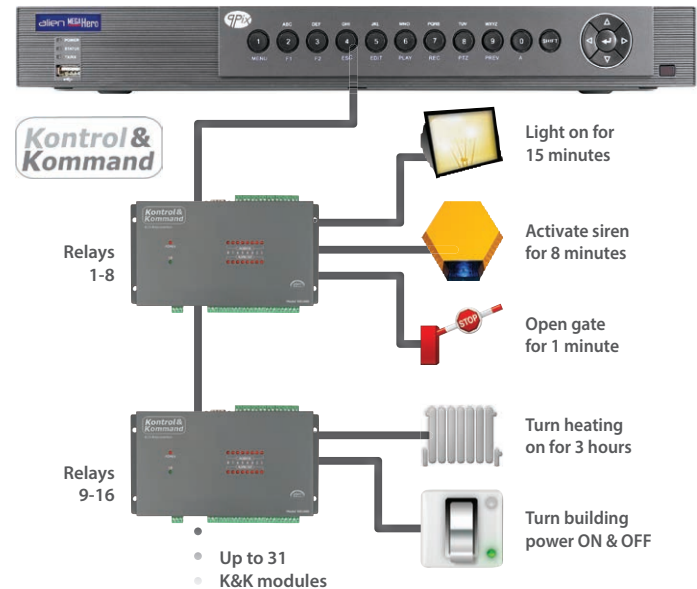
RS232 Connection

With an RS232 connection you can remotely control the VoiceOff audio unit to trigger up to 9999 audio messages via AlienVision. Alternatively you could control up to 8 timed relays with a single Kontrol & kommand module.



RS485 Connection

With an RS485 connection you can remotely control up to 31 Kontrol & kommand modules via AlienVision. This means you can control up to 248 timed relays. This also frees up the RS232 port for other devices such as a VoiceOff audio unit.

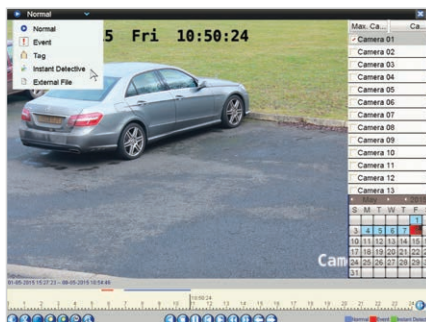


Instant Detective is one of the MegaHero's best features. It analyses footage retrospectively to quickly find events that have occurred.

If you are recording continuously wouldn't it be great if you could then 'analyse' a particular area, doorway, shelf and see what movement occurred within that area in the already recorded footage? Well you can with Instant Detective!

You have three options when using Instant Detective. '**Line Crossing Detection**' flags up anytime something moves across a user defined line. '**Intrusion Detection**' finds footage of times when something moves into and stays inside a user defined area. '**Motion Detection**' searches for any movement inside a user defined area.

The following is an example of how Instant Detective could be use. ▶▶▶

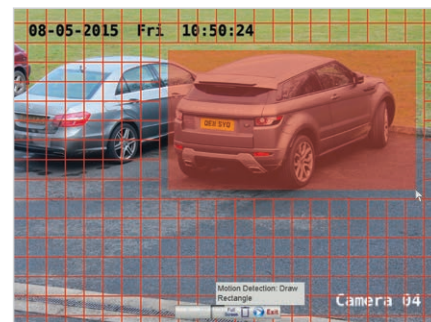


1 A car is stolen under the surveillance of a camera recorded on a MegaHero.

In the playback screen select '**Instant Detective**' from the drop down list. Choose the channel, date, then click '**Play**'.



3 Instant Detective quickly finds footage of any activity around the vehicle and highlights the occurrences in green



2 Click the '**Instant Detective**' button and select '**Motion Detection**'. Click and drag over the area you want to examine and click '**Play**'.



See online tip 235 for more information at aliendvr.com



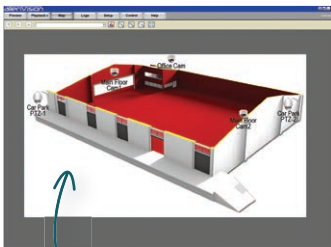
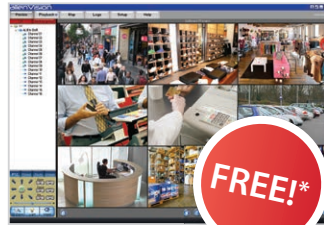
alienVision

See everything, anytime!

Control, view, trigger, playback and more!

Comprehensive client software for Windows PCs suitable for **controlling and monitoring multiple alienDVRs** and alienIP cameras over the LAN or Internet. Supports basic functions such as live viewing and playback as well as more comprehensive functions such as **detailed search, relay control, remote config, multi-layered mapping, and alarm notifications.**

Allows simultaneous connection to multiple DVRs and cameras and therefore can be used for quite comprehensive remote monitoring applications.



Input your own map or floorplan for electronic mapping!

*Free CD Supplied with all alienDVRs.

- Live Viewing
- View Multiple DVRs
- Playback
- Video Analytics
- Remote Config
- Relay Control
- Multi Layered Mapping
- Alarm Notifications

CCTV Window: **SOFT950**

alien Vu

Simple viewing of live CCTV and playback

alienVu client software is easy to use and boasts an uncluttered interface that allows simple live preview and playback from a single DVR at a time. alienVu is very easy to use and a good solution for PC users seeking software with a minimum learning curve.

Features include remote relay control and scheduled data downloading.

We offer a re-skinned version of the alienVu client software with the graphic, logo or text of your choice so you can tailor it to your requirements!

alienVu: **SOFT530**

Customised alienVu: **SOFT935**



your logo here!



alien Mobile Apps



On the go CCTV viewing!

There are apps for the iPhone, iPad and the popular Android operating system. These allow **remote viewing**, **PTZ control**, **relay control** and even **quad viewing** of a camera recording all on to the device. Use your device to monitor your CCTV system on the move, record footage and even control relay items like gates, barriers etc.

The perfect accompaniment to an alienDVR!



iPhone & iPad
Available through the App Store, just search 'alien DVR'

Android Phones & Tablets
To download visit: www.aliendvr.com

alien Desktop (PC Desktop Widget)

Keep your CCTV camera view above all windows

- alienDesktop Widget is a simple but extremely useful desktop widget that allows you to have a **single camera live on your desktop in a resizable window**. The window stays on top of other applications so that you can keep an eye on key areas like a reception or nursery without breaking from your work. The window can be with or without a frame to suit your requirements.



alienDesktop Widget: SOFT540

alien Play

Playback multiple CCTV footage - at the same time!

- Player software that can be used to playback multiple downloaded video clips from alienDVRs in synchronised time. It can currently playback 4 downloaded videos simultaneously. Easy to use and install.



Free download at: www.aliendvr.com

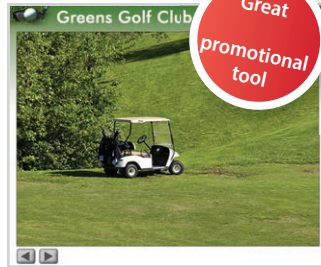


alien Show

Personalised remote viewer - all set up for you!

A standalone viewer that requires **no installation** on a PC, you can even keep it on a USB! It allows companies to distribute a promotional remote viewing application with their name on it and their graphics. Pre-populated with (all hidden) logon ID, password and IP address. All users have to do is click 'view' and they will see live images from a pre-determined CCTV camera.

Perfect promotional tool for any company from pubs, golf courses, theme parks, stables etc. Uses are only limited to their imagination!

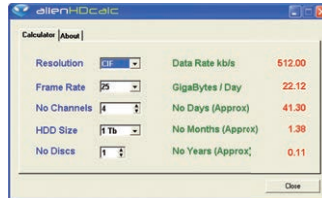


alienShow: SOFT545

alien HDcalc

"What size hard drive do I need?"

A simple program that allows you to calculate an estimate of the HD size you will require based on the number of cameras, recording resolution and frame rate to be used.



**Free download at:
www.aliendvr.com**

alien Webcam

alienWebcam is a very useful software module that allows you to capture snapshot images from any of your camera channels and automatically upload them to a web server for display on your company website.

How does it work?

alienWebcam connects to alienDVRs, takes snapshot images and then saves them on a PC or on to a website URL. This means companies can use the alienDVR to provide webcam pictures or even provide timed photo snapshots.

alienWebcam also has a timelapse feature which records snapshots at different times of the day and saves them locally. Third party software can then be used to create a high speed video of a set time period - often seen on TV to depict flowers blooming or seasons changing.

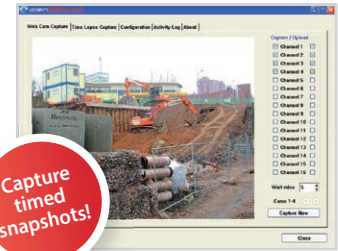
Who uses it?

This software has been used to provide snapshot images of buildings being constructed, traffic monitoring and even on a golf course to show website users the current conditions! Of course, it's also great for providing promotional webcam images of any type of business online.

Store snapshot images from CCTV cameras off site automatically. Very flexible software, useful for individual businesses, security, traffic monitors, shops etc.

A fantastic, automated solution that does the hard work for you.

alienWebcam - 1 Channel: SOFT520
alienWebcam - Multi Channel: SOFT522



Kontrol & Kommand Module



- Control Third Party Electrical Equipment
- Create Building Automation With An AlienDVR
- 8 Time Controlled Relays
- Use Up To 31 Modules Per DVR
- Control Up To 248 Devices Per DVR

The Kontrol & Kommand module allows remote control of third party electrical equipment/systems via the AlienDVR and our Free AlienVision software.

AlienVision sends a signal to the DVR which forwards the signal on to the Kontrol & Kommand module. Each Module has 8 relays that can be opened or closed for adjustable lengths of time.

You may send a signal to open RELAY 1 for 2 minutes, this may open a gate for a visitor. Or you may send a signal to RELAY 9 (second K & K module) to close for 3 hours which overrides a central heating controller. You might even open RELAY 3 for 9 minutes to triggers a siren because you have spotted intruders.

You can assign "groups" to the relays. You can even name each function and button in the software so that it's really easy to use.

Order Code: **RELO08**



See online tip 276 for a guide to using the Kontrol & Kommand module at aliendvr.com

KitVault - DVR Enclosure



- Hinged Lid For Easy Installation And Access
- Lockable To Prevent Unauthorised Access
- Easy Fit Fan Kits For Extra Cooling
- Wall And Desk Boltholes
- Extra Deep Design To Suit Most DVRs

Order Code: **CCT245**
Order Code: **FAN012**
(12V Fan Kit)



For more information on the KitVault see online tip 258 at aliendvr.com

HDMI Leads



Order Code: **VID501** (1M)
Order Code: **VID502** (2M)
Order Code: **VID503** (3M)
Order Code: **VID505** (5M)
Order Code: **VID510** (10M)

USB Memory Sticks



Order Code: **MEM678** (8GB)

DVR & PTZ Keyboard



- Compatible With All alienDVRs
- Controls 31 DVRs
- Controls 255 PTZs
- RS485 Connection & Control
- 1200M Range
- 15 Auxiliary Keyboards
- Compatible With 9 PTZ Protocols

Order Code: PTZ790

Portable DVD Writer



- Compatible With The MegaHero
- USB 2.0/3.0 Connection
- Plug And Play

With this portable DVD writer you can easily backup and copy recordings from your MegaHero DVR to disc.

Order Code: DVD305

Programmable Audio Alarm Unit



- Trigger Up To 9999 Sounds
- 20 Alarm Inputs Trigger 20 Recordable Warnings
- Removable SD Card
- Talkback Function
- RS232 Connection
- Weatherproof
- Activate Remotely Over The Internet
- Additional Sound Files Can Be Downloaded at www.voiceoff.com

The VoiceOff is an alarm activated voice or sound warning unit that has 20 separate alarm inputs, to trigger up to 20 different recorded sound files. RS232 inputs trigger up to 9999 sounds! Over 1000 pre-recorded sounds and messages are available for use at voiceoff.com.

Warning messages can be downloaded or recorded in MP3 format and stored on the removable SD card. These sounds can be used to welcome visitors, deter intruders, warn or inform people as they enter certain areas.

Order Code:
VOX200



For a guide on recording your own voiceOFF files see online tip 287 at aliendvr.com

External Anit-vandal NiteDevil Analogue Dome



- Auto Digital Zoom
- Dual Voltage
- Built In Balun
- Pelco D - RS485
- Pelco C - Up The Co-ax
- 700TVL Or 800TVL B&W
- Low Light – 0.00019Lux
- Internal Connections
- Vandal-proof
- Weatherproof
- Wall Or Ceiling Mounting
- Mega-pixel Lens

High performance dome camera with built in baluns and internal connections for a neat and easy installation.

The CAM220 provides superb image quality recording at 700TVL or 800TVL in black & white. As the CAM220 features NiteDevil technology it is more than capable of capturing great images in low light situations.

The CAM220 also features dual voltage power input, RS485 control, up the Co-ax telemetry and a mega-pixel 2.8 - 12mm lens.

Order Code: **CAM220**

Mini High Speed Analogue PTZ



- 550TVL
- Wide Dynamic Range
- 50M IR Range
- 144x Zoom
- High Speed Pan 240°/sec
- 360° Continuous Rotation
- 180°/sec Tilt With Auto-Flip
- 256 Presets, 8 Tours
- Multi-Protocol
- Privacy Masking
- Vandal-proof
- Just Ø14cm

The Cub mini high speed PTZ is cute on the outside but fierce on the inside! It features 550TVL, Wide Dynamic Range, 50M IR range, 12x optical zoom and 12x digital.

Panning at an incredible 240° per second and tilting at 180° per second, the Cub really is high speed. With 360° continuous rotation, 256 presets and 8 tours, the Cub is an impressive, top of the range PTZ.

Order Code: **PTZ640**

Traditional 2.8-12mm HD-TVI Camera



- 1080p HD
- 2.8-12mm Mega Pixel Lens
- Dual HD-TVI & Analogue Outputs
- CS Mount For Easy Lens Selection
- 12V DC
- 8x Digital Zoom
- Wide Dynamic Range
- 3D Digital Noise Reduction
- True Day/Night Filter
- Metal Case

A traditional style of camera to offer a reassuring CCTV presence in any retail environment. This camera offers great flexibility as the lens is not pre-fitted and can be changed to suit the installation. Supplied with a popular 2.8-12mm Mega pixel lens. The industry standard CS mount design allows you to choose from our wide range of lenses up to 50mm for great potential to zoom in on a gate or doorway.

Great for garage forecourts when installed in a tough and easy to maintain heated housing kit.

Order Code: **SEE250L**

External All-In-One IR LED IP Camera



- 1.3 Or 2 Mega Pixel 1080p
- True Day Night
- 2.8-12mm Lens
- 40m IR Range
- Wide Dynamic Range
- Privacy Masking
- Adjustable IR Brightness
- Audio In & Out
- RS485 Control
- Alarm In & Out
- ONVIF Compatible
- Power Over Ethernet (POE)

This attractive new range of IP cameras boast a mechanical IR cut off filter for superb surveillance day or night, ONVIF compatibility and POE.

Available in a 2MP or 1.3MP version, the camera offers superb 1080P resolution and is supplied with free client software for easy set up and installation. Adjustable high powered IR LEDs gives maximum flexibility for long range surveillance at night or by turning the LEDs down, they provide excellent close up surveillance too.

Order Code: **IP-CAM841** (1.3 Mega Pixel)

Order Code: **IP-CAM842** (2 Mega Pixel)

VideoMitter Lite Digital Transceivers



- Transmit Video Signals Up To 1.2Km
- Digital Data Transmission
- Privacy Pairing Function
- Video & Audio Loophroughs
- Handshake Routine
- Whisper Mode
- Range Of Optional Antennas Available

Order Code: MITKIT-LITE

AlienCCTV HDMI & VGA Monitors



- HDMI & VGA Inputs
- Full HD 1920 x 1080 (21.5" & 24")
- LED Backlight
- Anti-glare

Order Code: **LCD818** (18.5")
 Order Code: **LCD821** (21.5")
 Order Code: **LCD823** (24")

CCTV Mule

Send 4 Video Signals Down 1 Co-ax!



The CCTV Mule makes it easy to add extra cameras to existing installations, you save installation time and reduce the cost of buying and installing more cable.

The Mules work in pairs. One Mule combines the video signals to transmit them down 1 single Co-ax, the other Mule then reconstructs the individual video signals at the remote end. A low-cost, easy solution that offers huge installation benefits and opportunities to add extra cameras.

The clever electronics of the CCTV Mule also allow it to carry audio and RS485 data along the same Co-ax cable. You can even carry three video signals in one direction and a fourth signal in the other direction!

Order Code: **MULE004** (4-Way Pair)
 Order Code: **MULE002** (2-Way Pair)





For more information, tips and tools head over to aliendvr.com



Live Chat

Got a question? Speak to one of our team with live online chat.



Product Manuals

Lost your manual or just want a digital copy? You can find all our manuals online.



Warranty Registration

Register your new product online and receive a **FREE gift worth £30!**



Mobile Apps

Download the mobile app to view your CCTV system from anywhere in the world!



Tips & How To Guides

We have loads of online tips packed full of useful information.



FAQs

Find help on solving common problems with advice from our CCTV experts.



Software & Tools

Download handy programs like the video player for Windows or Hard Drive calculator.

Specification

	4ch	8ch	16ch
Video Compression	H264		
Video Inputs	BNC Analogue or HD-TVI		
IP Inputs	1x LAN		
Picture Format	PAL / NTSC		
Video Output	1 x HDMI & 1 x VGA		
Video Bit Rate	32Kbps ~ 6144Kbps		
Audio Inputs	1 x Phono (2.0v p~p)		
Audio Outputs	1 x Phono (2.0v p~p, 1K Ω)		
Audio Bitrate	64Kbps		
Recording Resolution	1080p (12 fps), 720p (25 fps)		
Frame Rate	Max. 25 fps in PAL		
Dual Stream	Mainstream/Substream		
Synchronous Playback	4 channels	8 channels	16 channels
SATA Interfaces	1 x SATA Hard Drive	2 x SATA Hard Drive	
Hard Drive Capacity	6TB	12TB	
Network Interfaces	RJ45 10M/100M		
USB Interface	2 x USB2 Interfaces		
Serial Interfaces	1 x RS485, 1 x RS232		

	4ch	8ch	16ch
Alarm Inputs	4 channels	8 channels	16 channels
Alarm Outputs	1 channel		
Power (PSU Supplied)	12V DC 2A	12V DC 3.3A	12V DC 5A
Consumption	460mA	870mA	1.6A
Working Temperature	-10°C ~ +55°C		
Working Humidity	10% ~ 90%		
Dimensions	50 x 320 x 230mm		50 x 380 x 295mm
Weight (Bare Bones)	1.5Kg		2Kg

All specifications are approximate. We reserves the right to change any product specifications or features without notice. Whilst every effort is made to ensure that these instructions are complete and accurate, we cannot be held responsible in any way for any losses, no matter how they arise, from errors or omissions in these instructions, or the performance or non-performance of the equipment that these instructions refer to.



WEE/CG07835S

This symbol on the products and/or accompanying documents means that used electronic equipment must not be mixed with general household waste. For treatment, recovery and recycling please return this unit to your trade supplier or local designated collection point as defined by your local council.

MegaHero 16ch Rear

